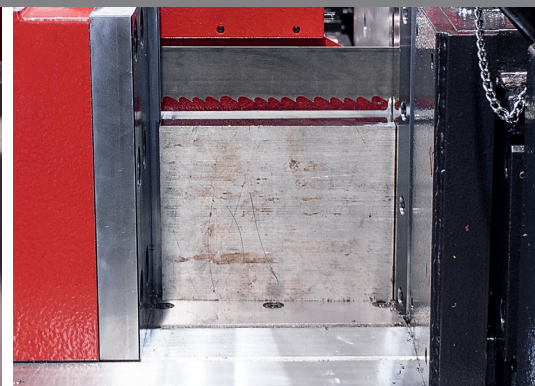
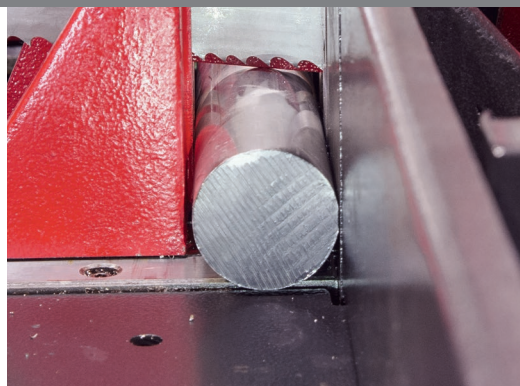
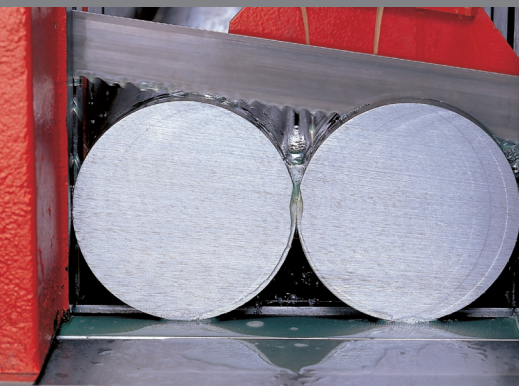
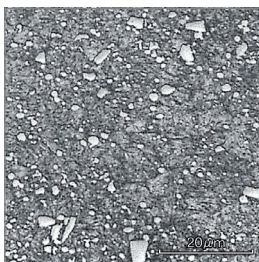
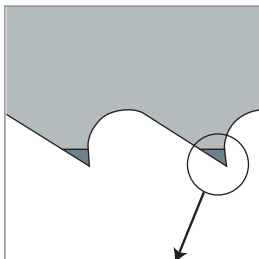


SGLB



| SGLB



Structure image of the tooth tip material (M42 HSS)

Robust universal saw blade for almost all material types and material sizes in the production range.

Properties

- M42 cutting material
- group pitch
- robust Design
- SMARTCUT version available (41 x 0.9 mm)

Advantages

- suitable for single and bundle cutting
- materials up to 1200 N/mm², also non-ferrous metals and plastics
- wide product range

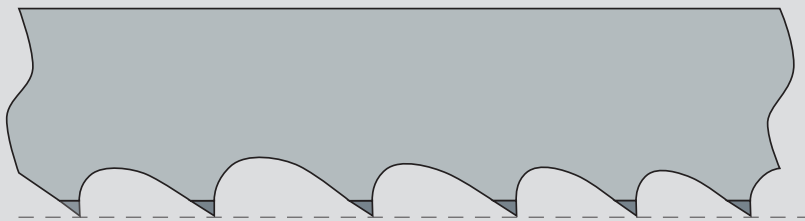
Comment

A small number of standard toothings with straight tooth number is also available. Ask your sales representative.

Comparison of wear when cutting 400 mm diameter, 1.2379 DIN standard (wear of the conventional saw blade = 100 %)



SGLB



Application materials – AMADA SGLB

Recommended	Suitable	Limited suitability*
Construction steel	Heat-treated steel, cold-worked steel, heat-treated steel, cast steel	Stainless steel

Construction steel



Heat-treated steel



Cold-worked steel



Hot-working steel



Stainless steel



Cast steel



Selection of the tooth pitch – AMADA SGLB delivery forms

Height	Thick-ness	1.1/1.5	2/3	3/4	4/6	5/7	6/10	8/12	10/14
20	0.9				•		•	•	•
27	0.9		•	•	•	•	•	•	•
34	1.1		•	•	•	•	•	•	
41	0.9		•	•	•				
41	1.3		•	•	•	•			
54	1.3		•	•					
54	1.6	•	•	•	•				
67	1.6	•	•	•					

Recommended run-in surface: 0.1 m²

* With respect to application notes, please consult your AMADA sales representative